

# PARCC Results: Spring 2015 and Spring 2016 Administrations

Hammonton Public Schools  
September 8, 2016

Measuring College and Career  
Readiness

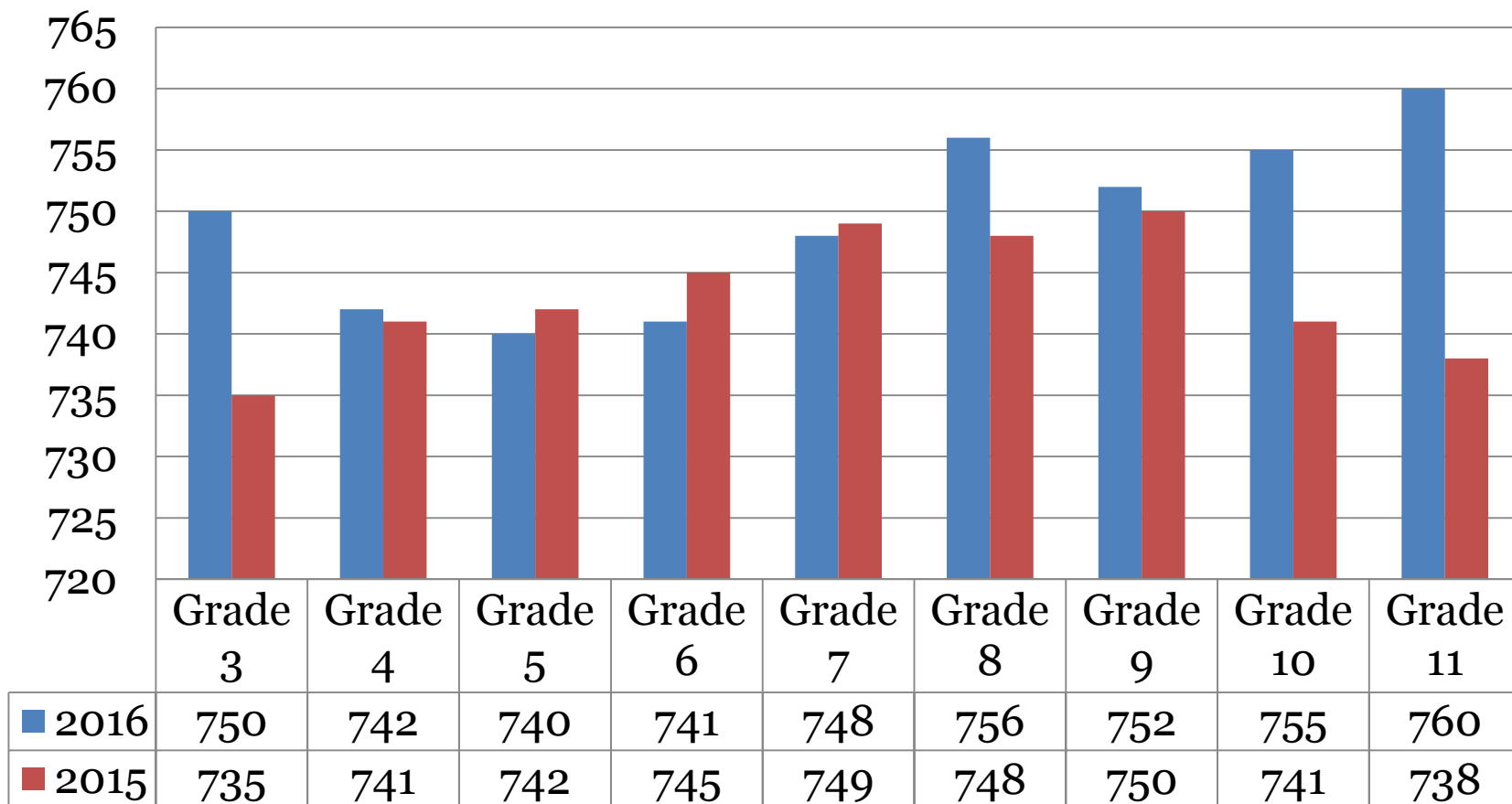
# New Jersey's Statewide Assessment Program

- 2016 marks the 2<sup>nd</sup> administration of the Partnership for Assessment of Readiness for College and Careers (PARCC) and the first opportunity to compare year-to-year results as the following slides will show.
- Students took PARCC English Language Arts and Literacy Assessments (ELA/L) in grades 3 – 11.
- Students took PARCC Mathematics Assessments in grades 3 – 8 and End of Course Assessments in Algebra I, Geometry, and Algebra II.

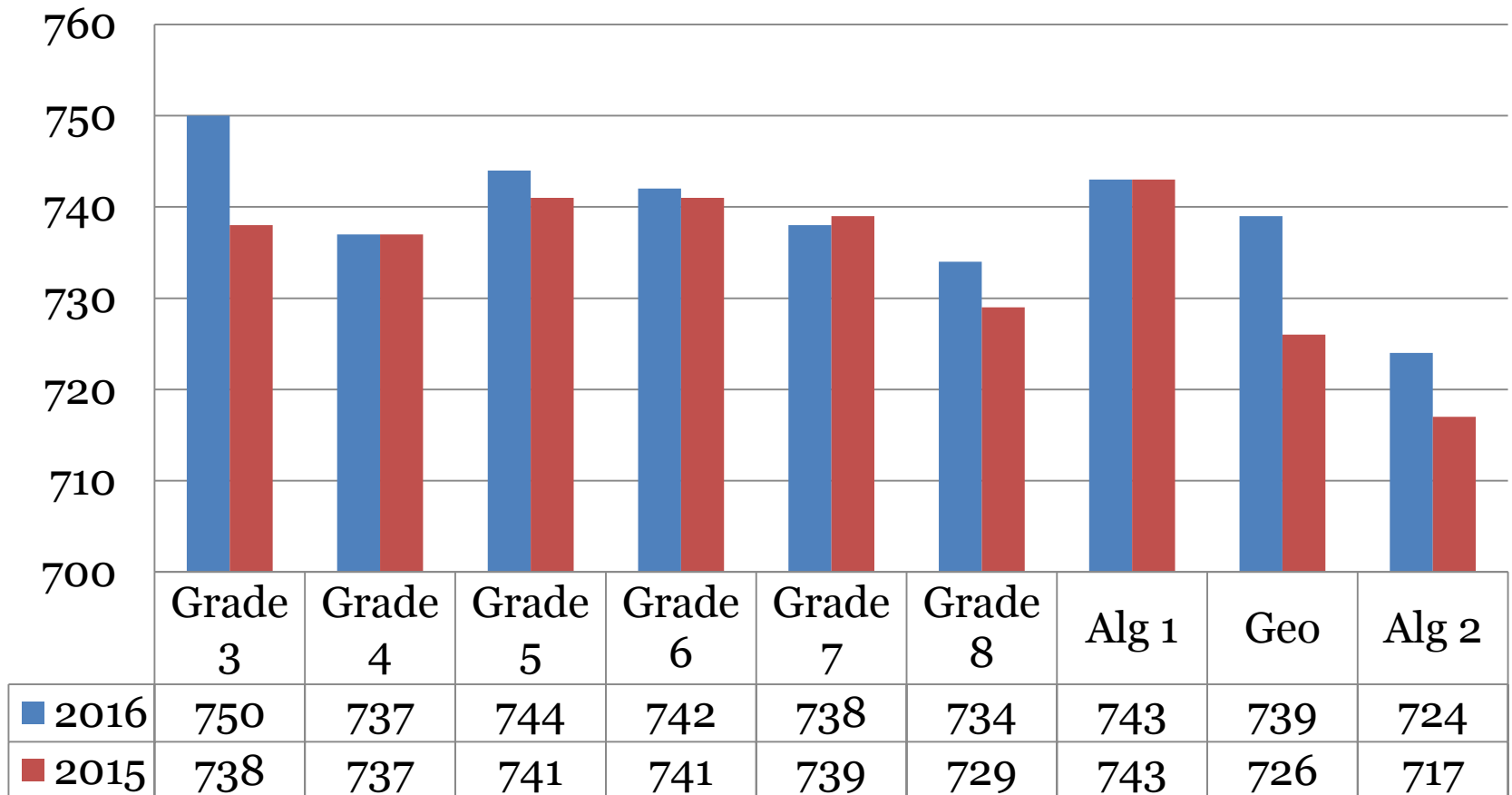
# PARCC Performance Levels

- Level 1: Not yet meeting grade-level expectations (650-699)
- Level 2: Partially meeting grade-level expectations (700-724)
- Level 3: Approaching grade-level expectations (725-749)
- **Level 4: Meeting grade-level expectations (750-809)**
- **Level 5: Exceeding grade-level expectations (810-850)**

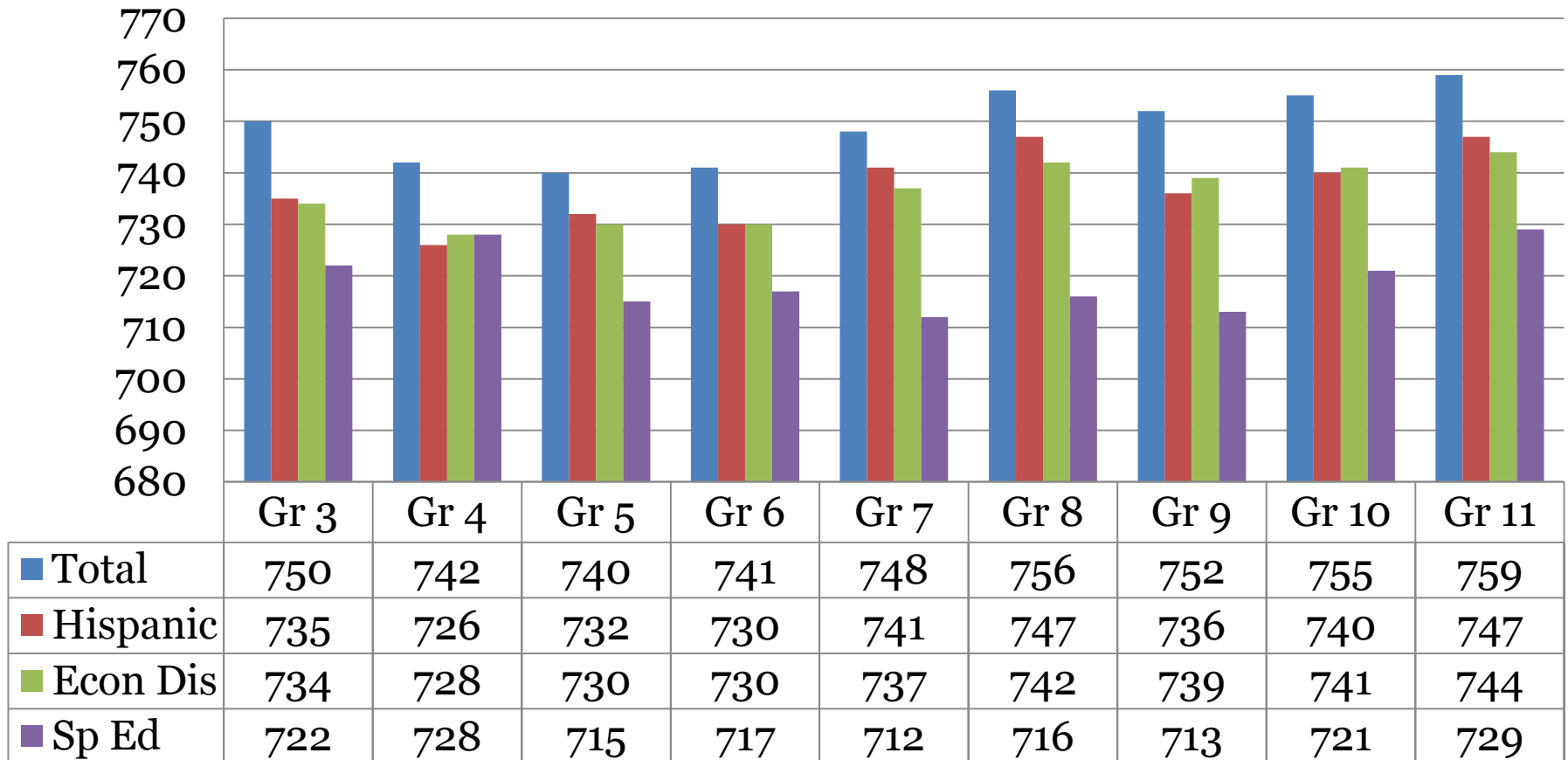
# Comparison Average PARCC ELA Scores Spring 2016 and Spring 2015



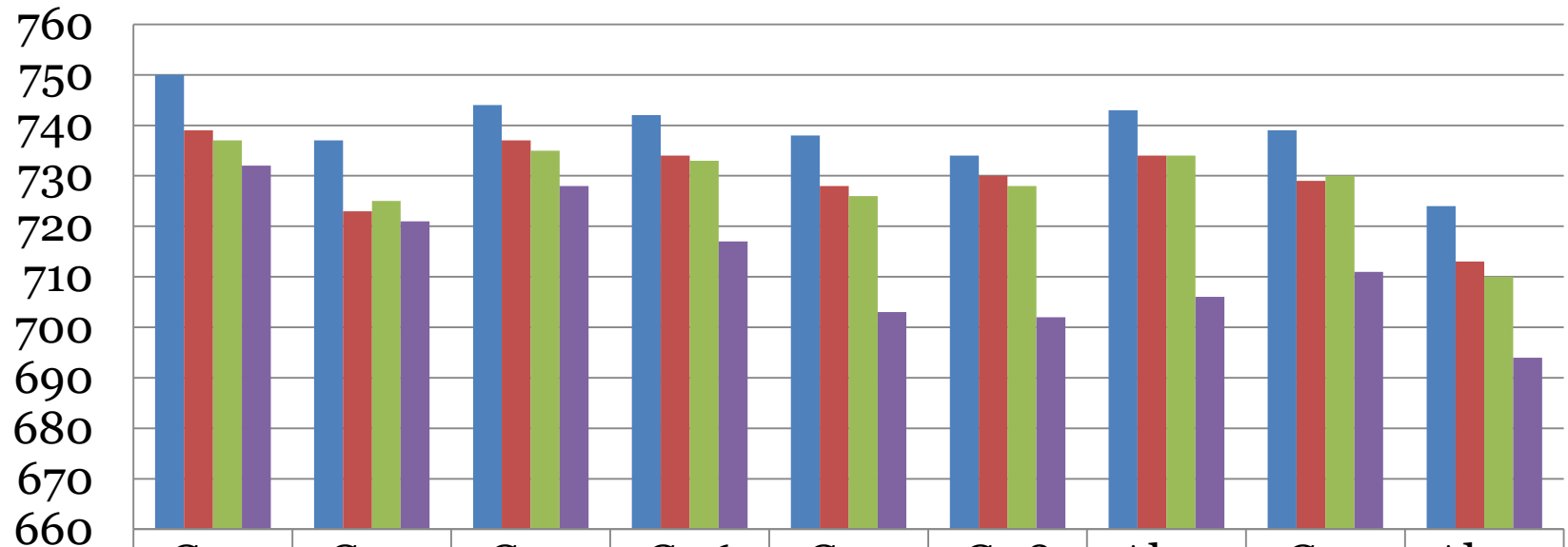
# Comparison Average PARCC Math Score Spring 2016 and Spring 2015



# District 2016 ELA PARCC Scores for Subgroup Populations

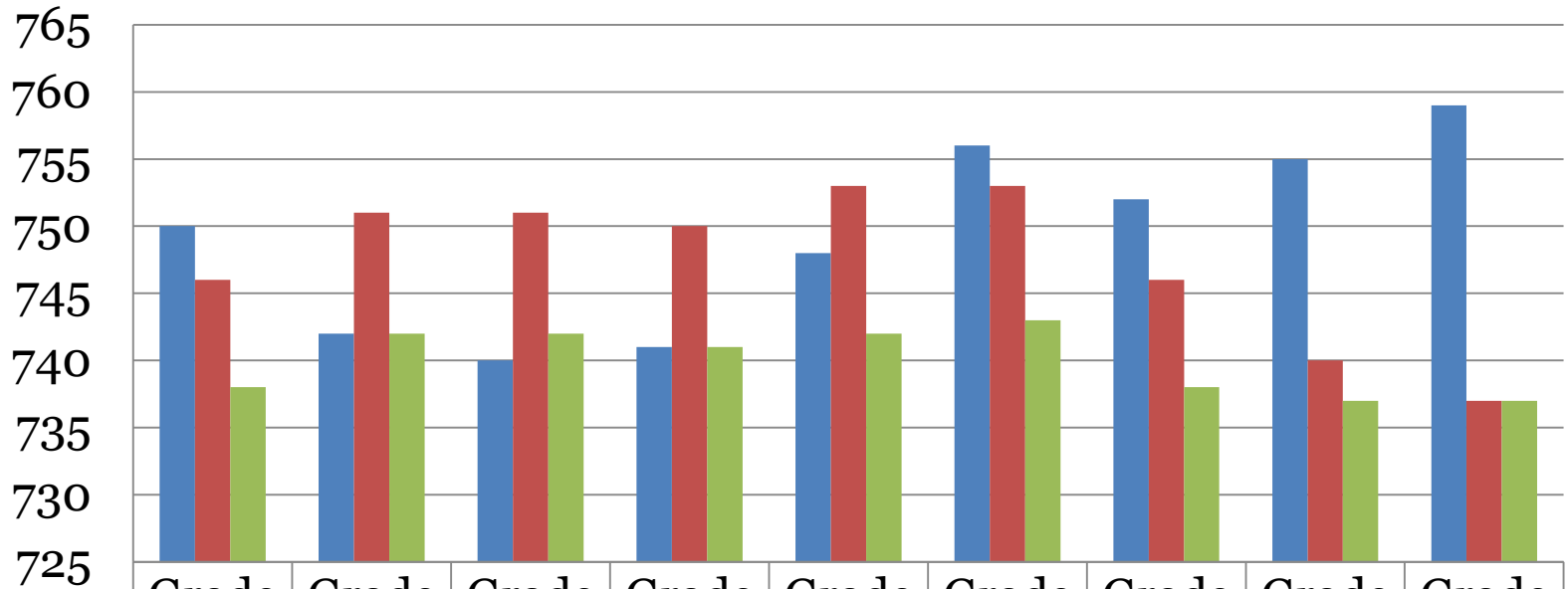


# District 2016 Math PARCC Scores for Subgroup Populations



	Gr 3	Gr 4	Gr 5	Gr 6	Gr 7	Gr 8	Alg 1	Geo	Alg 2
Total	750	737	744	742	738	734	743	739	724
Hispanic	739	723	737	734	728	730	734	729	713
Econ Dis	737	725	735	733	726	728	734	730	710
Sp Ed	732	721	728	717	703	702	706	711	694

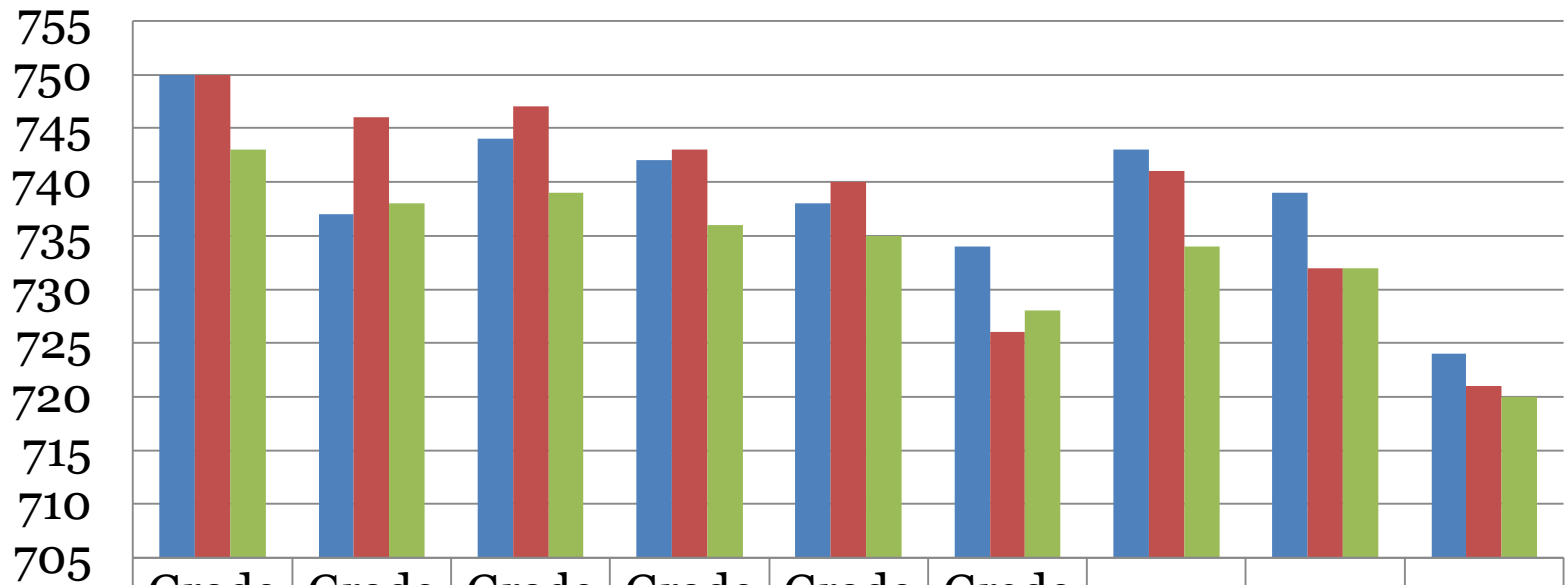
# Comparison Average PARCC ELA District, State and PARCC



■ District	750	742	740	741	748	756	752	755	759
■ State	746	751	751	750	753	753	746	740	737
■ PARCC	738	742	742	741	742	743	738	737	737



# Comparison Average PARCC MATH District, State and PARCC



■ District	750	737	744	742	738	734	743	739	724
■ State	750	746	747	743	740	726	741	732	721
■ PARCC	743	738	739	736	735	728	734	732	720

# Comparison of District's 2015-2016 Spring PARCC Administrations ENGLISH LANGUAGE ARTS/LITERACY to State

	% Decrease in Level 1 and Level 2		% Increase in Level 4 and Level 5	
	Hammonton	State	Hammonton	State
Grade 3	9%	3.4%	6%	4.1%
Grade 4		0.6%	7%	2.4%
Grade 5	1%	0.9%		1.7%
Grade 6		1.9%		3.5%
Grade 7	1%	3.3%		4.7%
Grade 8	7%	3.0%	12%	3.6%
Grade 9		8.7%	5%	9.2%
Grade 10	13%	7.8%	15%	7.7%
Grade 11*	24%	+1.1%	28%	-0.9%

\*Grade 11 does not include students who took an AP/IB test.

Notes: Percentages may not total 100 due to rounding.

# Comparison of District's 2015-2016 Spring PARCC Administrations MATHEMATICS to State

	% Decrease in Level 1 and Level 2		% Increase in Level 4 and Level 5	
	Hammonton	State	Hammonton	State
Grade 3	8%	2.8%	15%	6.8%
Grade 4		2.5%	2%	5.9%
Grade 5	8%	2.3%		6.2%
Grade 6	1%	1.0%	4%	2.2%
Grade 7		0.9%		1.9%
Grade 8	18%	1.3%	9%	2.1%
Algebra I*		5.0%	3%	5.2%
Algebra II	8%	0.1%	2%	1.1%
Geometry	23%	6.3%	19%	4.6%

\*Some students in grade 8 participated in the PARCC Algebra I assessment in place of the 8<sup>th</sup> grade Math assessment. Thus, PARCC Math 8 outcomes are not representative of grade 8 performance as a whole.

Notes: Data shown is preliminary. Percentages may not total 100 due to rounding.

# Questions to Guide PARCC Data Reflection

- How will we use PARCC data to identify strengths and gaps that exist in our curriculum and instruction?
- How will we use PARCC data as a tool to address areas in need of improvement or enhancement?
- How can we provide additional resources and support for our educators to meet the learning needs of all our students?

# Resources for Parents

- **Information on the new 2015-16 PARCC Student Reports:**  
[www.state.nj.us/education/assessment/parcc/scores/](http://www.state.nj.us/education/assessment/parcc/scores/)
- **Understanding the student score reports (with translations):** [understandthescore.org/](http://understandthescore.org/)

How Did xxxx Perform Overall?

**Performance Level 3**

